



45. Silted lower Shamalan Canal in Zarist area. 17 Oct 97



46. Darwishan Bridge looking east. Original structure intact.
17 Oct 97



47. Washed out Darwishan Bridge approach looking west. Approach is excavated and ready for gabion fill. 17 Oct 97



48. Lashkar Gah bridge looking east. 21 March 97

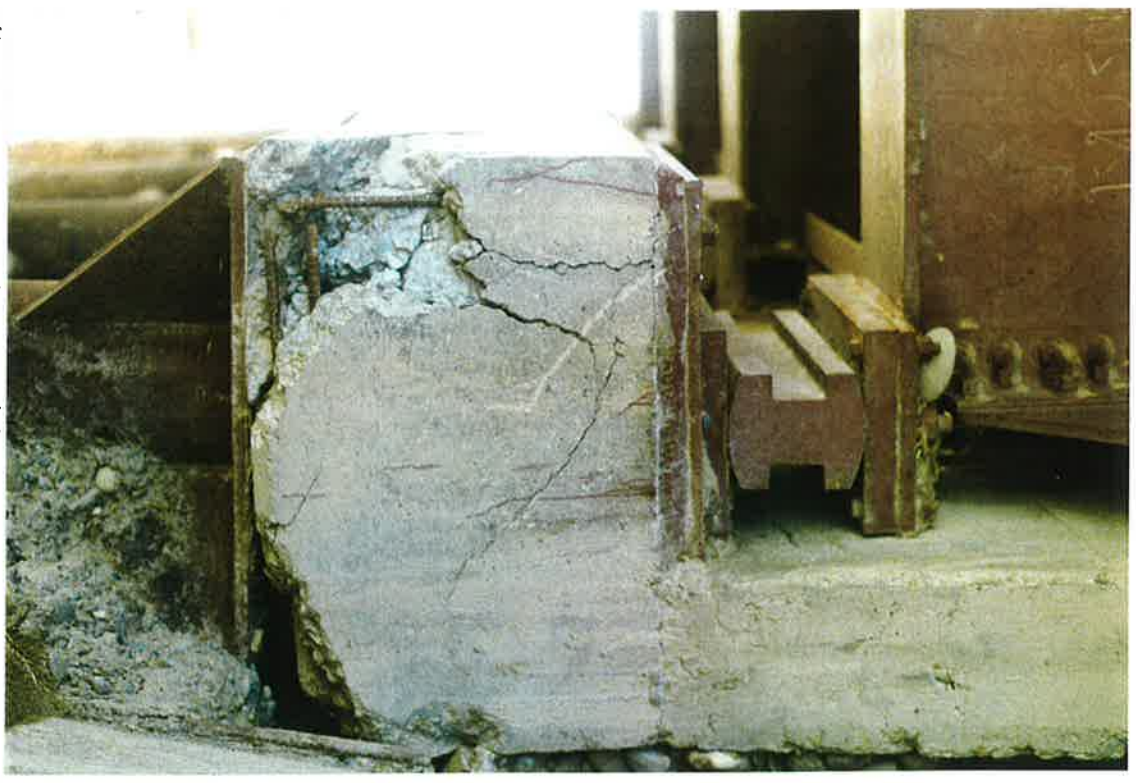


49. West end of Lashkar Gah bridge with cracked beam. Note old container being used as bridge protection from flood flows. 21 March 97



50. Close up of cracked bridge beam. 21 March 97

51. End view of damaged bridge beam of Loskkrabak
bridge. 19 DT 97



52. End view of damaged bridge beam of Loskkrabak
bridge. 21 March 97





53. Diversion structure of Boghra Canal intake off the Helmand River. Note wash out on left, 20 March 97



54. Diversion structure of Boghra canal intake on Helmand River. Note damaged concrete. Gates functioning. 20 March 97



55. Diversion structure of Boghra canal intake on Helmand River from up-stream. Note damaged but functioning gate on right, 20 March 97



56. Gates of diversion structure of Boghra canal intake on Helmand River, 20 March 97



57. Baghra Canal intake structure on Helmand River with 2 gates open. 20 March 97



58. Baghra Canal intake structure on Helmand River with missing gates lift mechanisms. Note failed over-head lift beam. 20 March 97

59. Close up of missing gates
lift mechanisms on Boghra
canal intake structure.

20 March 97



60. Three gates of Boghra
canal intake structure.

20 March 97





61. Washed out left wing of Boghra Canal intake structure. 20 March 97



62. Two gates of Boghra Canal intake structure. 20 March 97



63. Old failed MKA river diversion dike (ca. 1947) on Helmand River
From Boghra canal diversion structure at intake. Dike in upper right corner.
20 Oct 97



64. Close up of old failed MKA river diversion dike on Helmand River.
20 Oct 97



65. Old Failed MKA river diversion dike on Helmand River from north,
20 March 97



66. Close up of old failed MKA river diversion dike on Helmand River,
Up stream (north) side,

20 March 97

67. Close up of old failed
MKA river diversion dike,
down-stream (south) side with
recent repairs.
20 March 97



68. Close up of failed recent repairs to
old failed MKA river diversion dike
on Helmand River from old dike
looking west.

20 March 97



69. Looking north up Helmand River channel at location of old failed MKA upper river diversion dike (ca. 1947) from Boghva canal intake.
20 March 97



70. Same as #69 above. 20 Oct 97



71. Close up looking north up Helmand River channel at location of old failed MKA upper river diversion dike from Boghra intake. Note large block base of old dike. 20 Oct 97



72, Failed recent attempt at river diversion dike funded by Farmers, located between the 2 MKA diversion dikes. 20 March 97



73. Recent failed river diversion dike funded by farmers from the east, The Boghra canal intake structure is left of center. 20 March 97



74. East end of recent failed diversion dike funded by farmers, looking east. 20 March 97



75. Girishk power plant on Boghra canal, up stream side.
20 March 97



76. Girishk power plant with silt on Boghra canal, downstream side.
20 March 97



77. Excavated/breached Boghra canal embankment south of Girishk.
20 March 97



78. Exposed siphon and washed out channeling at Ab Pashak wash.
In October the siphon had been re-covered by gravel/silt.
20 March 97



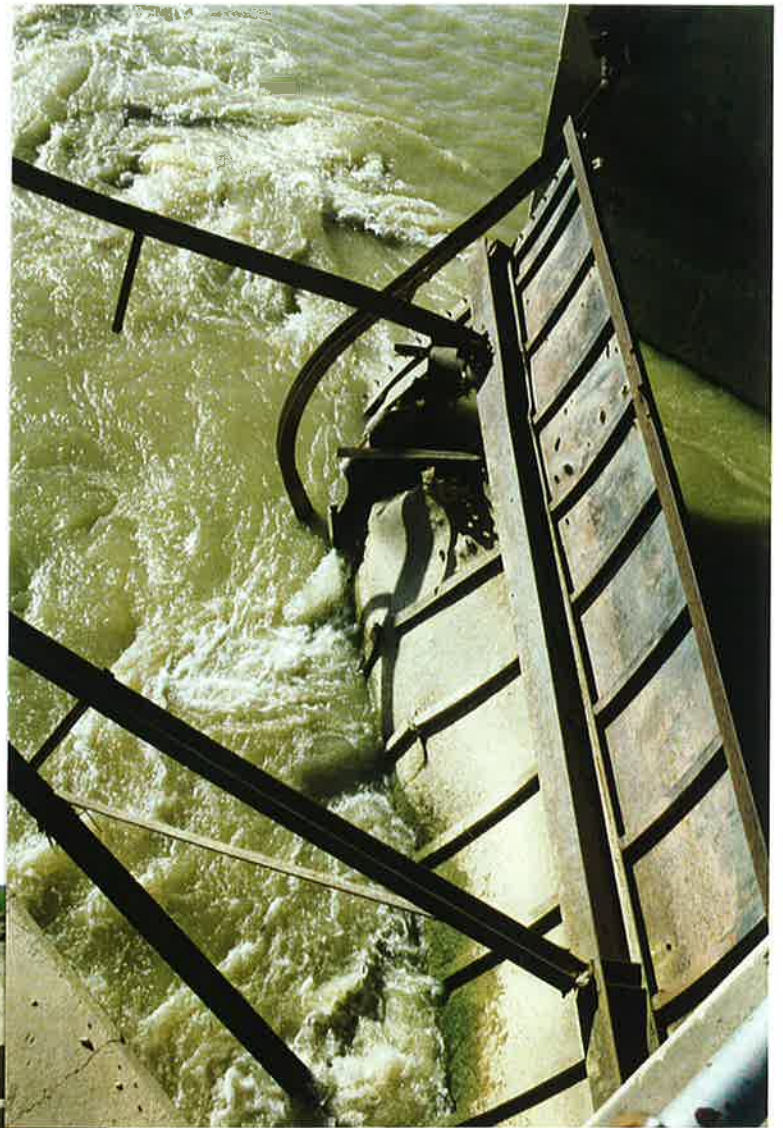
79. Lay Munda siphon being eroded out by spring flood.
18 March 97



80. Control structure on Boghra canal at wasteway north of Shamalan diversion. All gates damaged and inoperable.
20 March 97

81. Damaged gate on Boghra canal control structure at Waste-way north of Shamalan diversion. See #80.

20 March 97



82. Gate lift mechanisms with missing parts on Boghra canal control structure. See #80 + 81 above. Waste way going off at end of walk way.

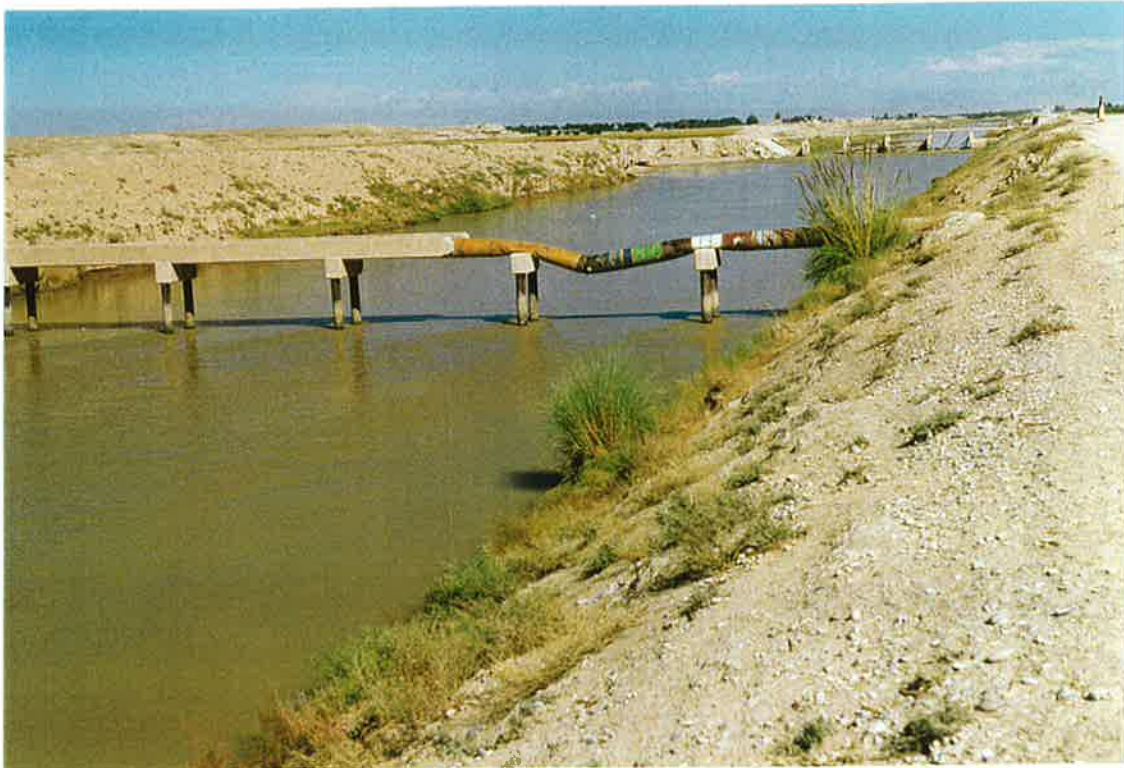
20 March 97



83. Waste way gates off Boghra Canal. An alternative gate lift mechanism has been made. 20 March 97 See #80-82 above.



84. Farmer control structure in desert, out-of-project land near Marja.
22 March 97



85. Damaged and repaired flume across Boghra Canal north of Nad-i-Ali,
20 Oct 97



86. Farmer diversion structure on Boghra canal north of Nad-i-Ali. Note
grassy silt bank on Far side.

20 March 96



87. Control Structure on Baghra Canal at Shamalan canal intake. Gates lift mechanisms are damaged or missing



88. Gate lift mechanism part missing. See # 87 above.

18 March 97



89. Damaged gate. Sec # 87-88
above. 18 March 97



90. Farmer maintained ditch in
Nadri-Ali. 19 March 97



91. Farmer maintained farm drain in Nad-i-Ali, 19 March 97

92. (below) Un-maintained main drain in Nad-i-Ali, 19 March 97





93. Silted Boghva canal near Marja from silt embankment.
22 March 97



94. Wash crossing near Marja. Note silt embankments at water edge.
22 March 97



95. Control Structure on Boghra Canal at a Marja wasteway. Note washed wing on left, 22 March 97



96. Silted waste way gates near Marja. 22 March 97



97. Farmer excavated irrigation ditches in silted bed of a wasteway near Marja. See # 95-96 above. 22 March 97



98. Farmer built bridge across Boghra canal near Marja. 18 Oct 97



99. Control Structure at a Waste way on Baghra Canal, silted and missing gates. Near Marja. Waste way structure near top center. 18 Oct 97



100. Waste way gates off Baghra canal near Marja, See # 99 above. 18 Oct 97

101. Farmer excavated irrigation ditch in silted wasteway bed off Boghra canal near Marja. See #99-100 above. 18 Oct 97

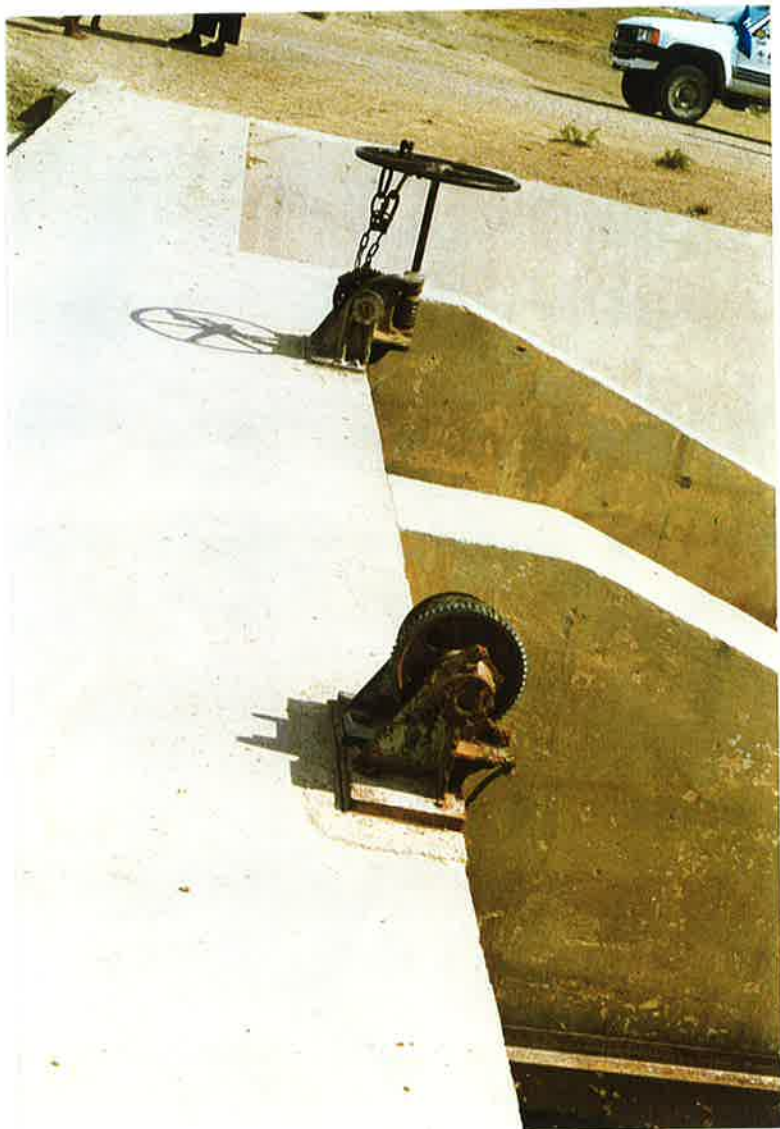


102. (below) Damaged (blasted) siphon on Boghra canal near Marja. Note silt embankment at water edge. Siphon still functions. 18 Oct 97





103. Damaged control structure on Boghra Canal near Marja. One gate functions. Note washed out wings. 18 Oct 97.



104. Locked gate lift mechanism on control structure on Boghra canal. See #103 above. 18 Oct 97



105. Silted Boghra Canal near Marja. 18 Oct 97



106. Damaged drop structure on Boghra canal near Marja. Note wash-out on left. 18 OCT 97

107. Damaged drop structure on Boghra Canal near Marja. See # 106 above.
18 Oct 97



108. Excavated vegetable plot on silt embankment on Boghra canal near Marja. 18 Oct 97



109. Central Marja channel cleaned by local water users organization, 18 Oct 97.



110. Central Marja channel cleaned by local water users organization. It needs more of the growth removed. 18 Oct 97



111. Central Marja over-grown channel. Gatas missing from control structure. 18 Oct 97



112. Un-maintained main drain near Marja. 22 March 97